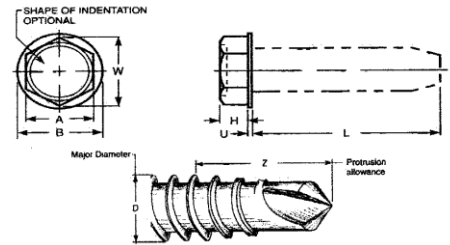
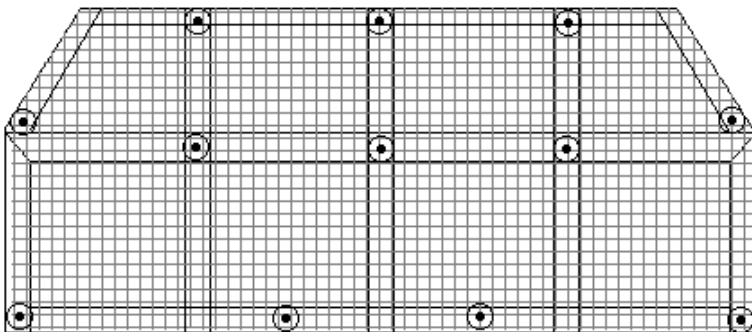
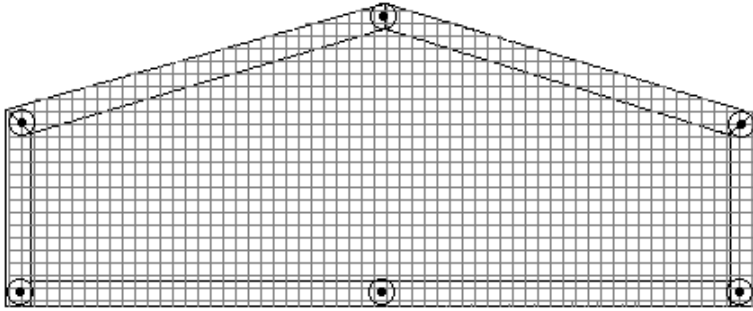




HAIL GUARDS



SPECIFICATIONS

Hail Guards shall be manufactured by Lubbock Skylight Manufacturing [(800) 390-2301]. Each hail guard shall be factory assembled with 0.062" x 1 1/2" x 1 1/2" extruded (6063-T5) aluminum welded framework with 0.063" x 1/2" x 1" galvanized hot dip wire mesh covering the aluminum frame. Fasteners are zinc plated carbon steel with a hex washer head. Washers will be stainless steel.

ALL UNITS ARE GUARANTEED AGAINST DEFECTIVE WORKMANSHIP AND MATERIAL.

PROJECT NAME		TODAY'S DATE	Qty	Rail Measurement Including Screw Heads
PROJECT ADDRESS		PO #		
NAME		JOB #		
COMPANY		NEED DATE		
ADDRESS				
TELEPHONE	APPROVAL SIGNATURE			

Some Sizes May Have Material Limitations

Hail guards fit over your existing retaining rail and attach the through the sides of the hail guard frame. The inside of the frame will be the rail measurement plus the existing screw heads.